

THE SEPARATION OF ABRAM AND LOT

Old Testament Lesson #8 • Genesis 13:2-18



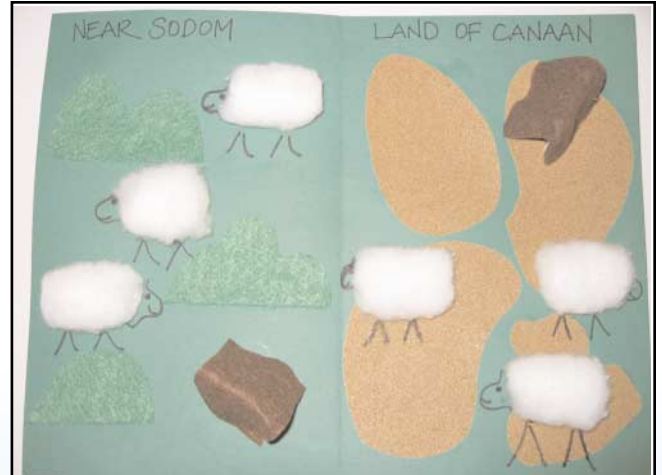
Abram and Lot separate. Lot chooses the green area of Sodom, and Abram goes the other way to the less fertile land of Canaan.

SODOM AND CANAAN 3D MAP

This map is made of paper, felt, sandpaper and cotton balls.

Items Needed

- Sandpaper
- Green felt
- Brown felt
- Brown or any other color chenille stems
- Green construction paper or cardstock
- Black markers
- Cotton balls
- Wire clippers
- Glue

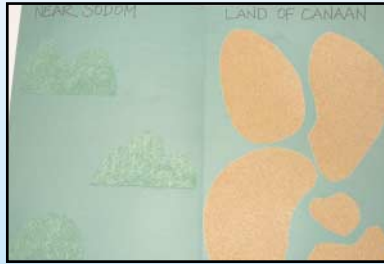


Be creative! Add rocks, different animals, Abram, Lot, etc.

FOR TENT



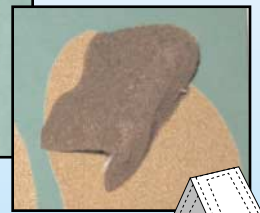
Steps 3 and 4



Steps 5 and 6



Step 7



Step 8

Directions

1. Fold paper in half.
2. Write "Near Sodom" on the top left side of the paper. Write "Land of Canaan" on the top right side.
3. Cut two 3" x 1.5" pieces of brown felt to make tents.
4. Cut three pieces of chenille with wire clippers to make an "H" for the back of each tent. Glue to the tents and let them dry.
5. Cut three pieces of green felt to look like hills. Glue them onto the Sodom side.
6. Cut pieces of sandpaper to cover most of the Canaan side. Glue them to the Canaan side.
7. Glue three cotton balls onto each side for sheep. Draw faces and legs.
8. Glue one tent onto each side.